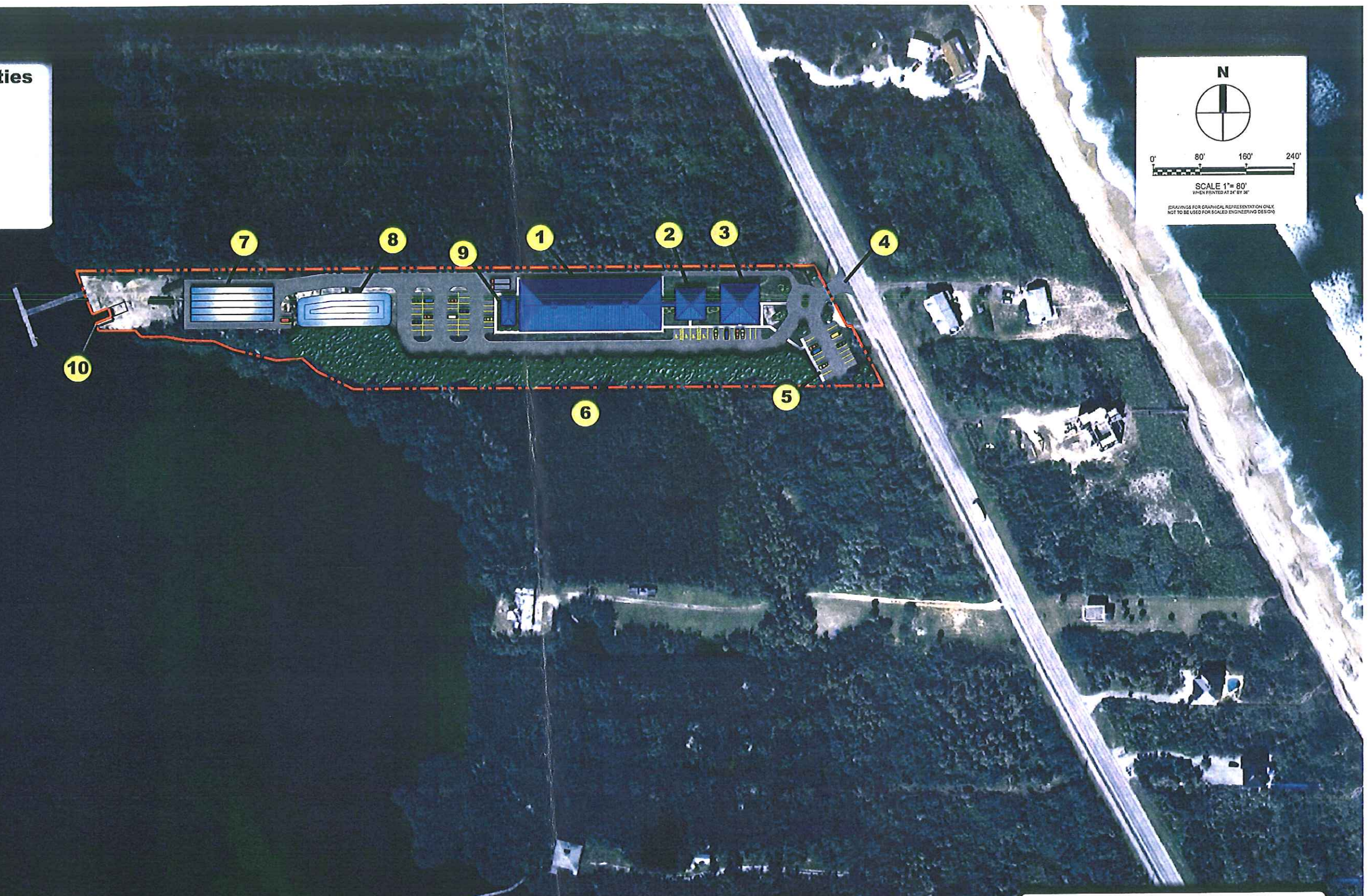
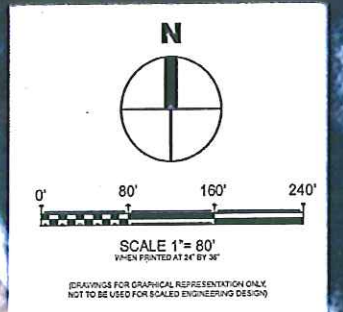


Key to Illustrated Facilities

- 1 Marine Hatchery / Laboratory
- 2 Conference Center
- 3 FFW & HSRI Combined Offices
- 4 Facility Entrance
- 5 Visitor Parking
- 6 Wetland Restoration
- 7 Raceways
- 8 Pond
- 9 Utility/ Necropsy
- 10 Rehabilitate Boat Ramp and Docks



FLORIDA'S NEW SALTWATER FISH HATCHERY NETWORK Partners and Supporters:



**HUBBS SEAWORLD RESEARCH INSTITUTE
BREVARD COUNTY, FLORIDA**

STOCK ENHANCEMENT RESEARCH FACILITY PROJECT



FLORIDA FISH AND WILDLIFE
CONSERVATION COMMISSION
620 SOUTH MERIDIAN STREET
TALLAHASSEE, FLORIDA 32399-1600

RECEIVED MAR 30 2009

